

AMES AREA METROPOLITAN PLANNING ORGANIZATION
TRANSPORTATION POLICY COMMITTEE

SUBJECT: S. DUFF AVENUE CORRIDOR AND INTERCHANGE STUDY

BACKGROUND:

The need for a study of the S. Duff Ave. corridor from S 16th St to Airport Rd (see Figure 1 below showing study limits) was originally identified in the Ames Area MPO's 2045 Metropolitan Transportation Plan, Forward 2045, due to the reconstruction of the S. Duff Ave. and US 30 Interchange being listed a mid-term project in Forward 2045's fiscally constrained plan. S. Duff Ave. is one of the primary regional connections into the Ames urban area and serves nearly 30,000 vehicles a day on average within the study area. The primary intersections along this study corridor are estimated to make up 4 of the top 15 highest volume intersections in the Ames region, including the highest volume intersection, S. Duff Ave. & S 16th St. Additionally, according to the MPO's travel demand model, the traffic volumes along the study corridor are expected to continue to grow, particularly should anticipated future development occur to the south.

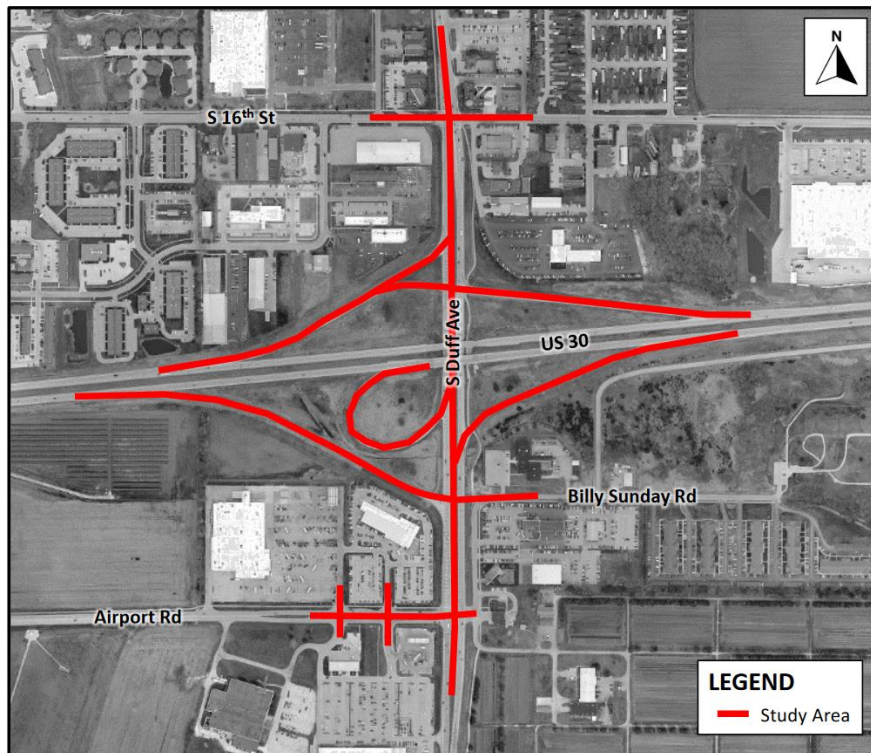


Figure 1. Study Limits

Earlier this year, the Ames Area MPO included this study in its Federal Fiscal Year (FFY) 2023 Transportation Planning Work Program (TPWP) as a special study. **The FFY23 TPWP allocated \$100,000 in MPO planning funds to this study with \$25,000 as the needed local match from the City of Ames as the local sponsor for the study for a total project budget of \$125,000. The City of Ames lists this project in its 2022-23 Capital Improvements Plan (CIP) within the Traffic System Capacity Improvements Program, with the \$25,000 local match coming from Road Use Tax funds.**

CONSULTANT SELECTION:

Following applicable federal and state mandated purchasing requirements, to allow use of federal planning funds, the City of Ames solicited a Request for Proposals (RFP) for the study. A total of six (6) proposals were received. Each of these proposals were evaluated and ranked by a project selection team consisting of Ames Area MPO, City of Ames, and Iowa DOT staff. Listed below are the criteria used for scoring the proposals:

<u>Scoring Criteria:</u>	<u>Points</u>
Project Understanding & Approach:	25
Project Team & Key Personnel:	25
Previous Experience:	20
Understanding of Study Area/Ames:	10
Ability to Perform Work:	10
Responsiveness:	10

The scores for the received proposals, utilizing the above criteria, are as follows:

Rank	Firm	Score
1	HDR Engineering, Inc.	97
2	Strand Associates, Inc.	92
3	SRF Consulting Group, Inc.	89
4	Snyder & Associates, Inc.	82
5	HR Green, Inc.	81
6	Shive-Hattery, Inc.	78

Given the above rankings, **staff has negotiated a contract with the highest ranked firm, HDR Engineering, Inc. of Omaha, Nebraska.**

STUDY SCOPE:

The key services the consultant will perform include the following:

- Evaluation of existing conditions (vehicle traffic counts, crash data, transit usage, bicycle and pedestrian usage, multi-modal origin-destination behavior)
- Traffic forecasting to years 2030 and 2045 by utilizing the Regional Travel Demand Model
- Develop and refine corridor and interchange alternatives by utilizing traffic modeling (including the use of microsimulation models) in coordination with City of Ames and Iowa DOT staff.
- Provide planning-level cost estimates, conceptual layouts, estimated vehicle emissions, and a 20-year life-cycle cost-benefit analysis for the 2 refined build alternatives.
- Provide support for a public open house.
- Develop a report detailing the study's findings, including a presentation of the draft report to the Ames Area MPO Transportation Policy Committee for feedback.
- Finalizing the report, including the development of a funding plan to design and build the recommended alternative as well as a desired timeline for implementation of the improvements.

ALTERNATIVES:

1. Recommend that the City of Ames approve the professional services agreement for the S Duff Avenue Corridor & Interchange Study (S 16th St to Airport Rd) project with HDR Engineering, Inc., of Omaha, Nebraska, in an amount not to exceed \$124,958.
2. Direct staff to negotiate an agreement with another firm.

ADMINISTRATOR'S RECOMMENDATION:

The need for this study was originally identified in Forward 2045 and the results from this study will provide direction in programming future capital projects. Based on staff evaluation, HDR Engineering, Inc. will provide the best value for this study.

Therefore, it is recommended by the Administrator that the Transportation Policy Committee adopt Alternative No. 1, as noted above.